

Crazy Horse Trail

The Crazy Horse Trail is on City of Ottawa property, which is bordered by private property on all sides. The trail is rugged and strenuous in places. Hikers should be relatively fit and use appropriate footwear; i.e. hiking boots with good ankle support.

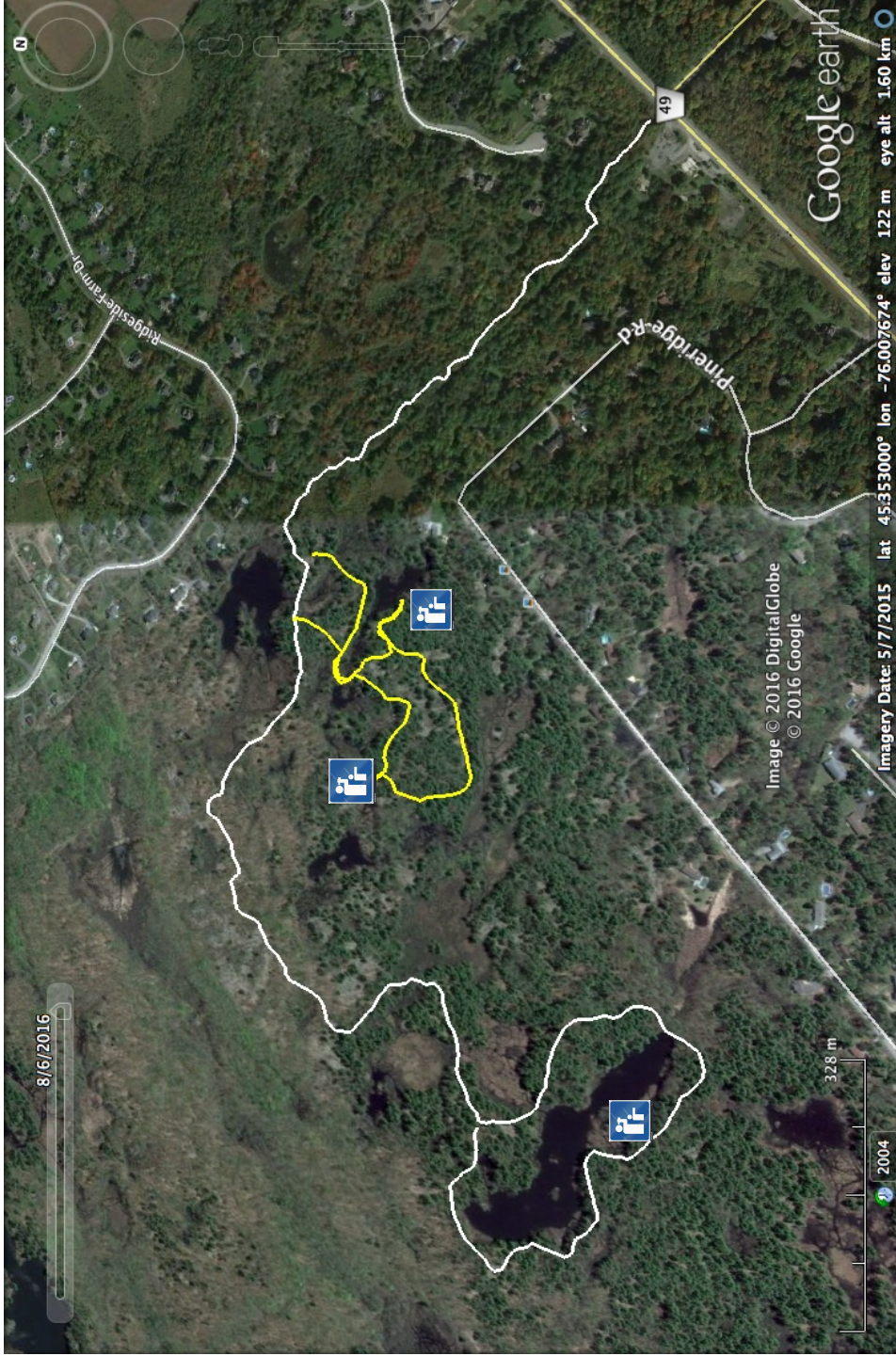
Carp Hills Trail Use Guide

- Please remain on the marked trail.
- Please respect the private property and the privacy of landowners who live adjacent to the trail.
- Dogs must remain on leash. Please pick up your pet's deposits.
- Please don't collect or damage plants and flowers. Avoid walking off-trail, particularly on rock outcrops with fragile lichens and mosses.
- Camping, campfires, and BBQing are not permitted.

Safety in the Carp Hills

- Dress to prevent tick bites from spring through fall. (See our web site for details.)
- There is poison ivy on and near some parts of the trail. Learn to recognize it.
- Prepare ahead for your hike. Dress appropriately for the weather conditions.
- Stay on officially marked trails. It's easy to get lost if you stray from the trail.
- Do not approach wild animals. Give them a wide berth. There are black bears in the Carp Hills.
- If you are hiking alone, give someone your route and timetable.
- Carry a cellphone. Cellphone reception will vary depending on your location.

Crazy Horse Trail



Use the trail at your own risk

Respect Private Property

The trail is 6.2 km in length return, which includes the loop around the pond. The trail is accessed on the northwest side of March Road at the intersection with Huntmar. Parking is available on the wide shoulder by the trailhead. The first 760m is on a narrow strip of City-owned land that runs parallel to a rough and uneven road allowance shared with snowmobiles. Private property and houses run on the left and right sides. The trail overlaps with the road allowance at the end of this section; please respect the private property boundaries and let snowmobiles pass. After the first 760m, the trail turns left (southwest). The main trail is marked with orange markers. The side loops are marked with yellow trail markers. Scenic lookouts are marked with blue markers.